

Gooer Mobile User Manual

V1.0

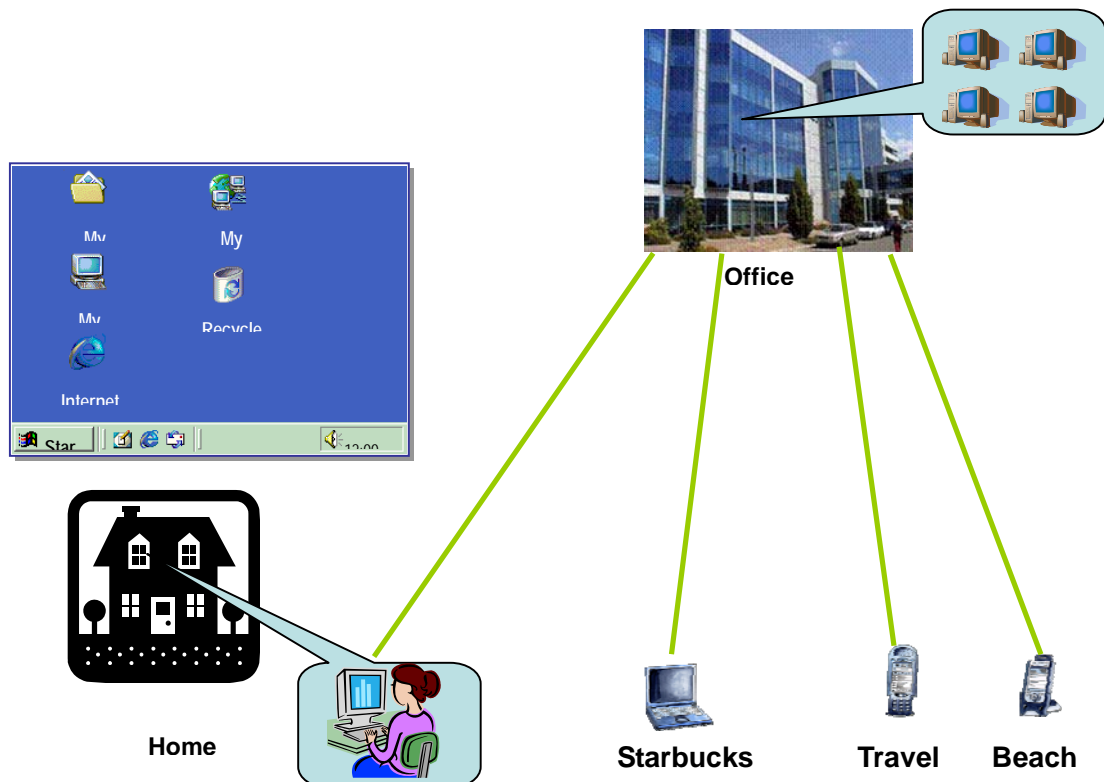
<http://www.gooer.com>

Copyright (c) 2007

1. Introduction

Gooer is a service provider that let you can access your PC from anywhere through your mobile phone, PDA, PC, laptop. Your host PC can behind firewall or NAT. **Gooer** let you can login your remote computer using web browser or mobiles and work at it as if you were seated at there.

Here is a sample. Sarah has 4 PC in her office. At night, she can use **Gooer** service to login her computer in office at home through her PC in home. When she discuss business with customer in Starbucks, she can login her computer in office through laptop and have a demo to customer. When she on travel, she can login her computer in office through mobile phone to receive and send email. When she at beach, she still can copy a file from her office computer to her manager.



With **Gooer**, everything is under your control.

Gooer support connecting to your remote PC using Java powered phones and Symbian mobiles,

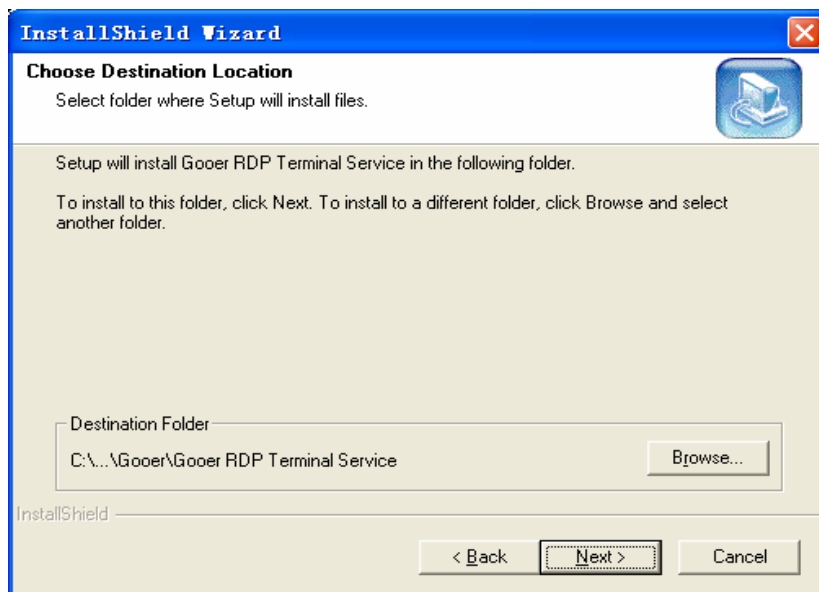
System and Network requirements for mobiles:

- **Supported devices:** Java (j2me) MIDP 2.0

- **Memory capacity:** Not less than 2 Mb of memory with potential possibility to download applications more that 150 Kb size.
- **Screen size:** Not less than 130x170 at 65536 colors.
- **Network requirements:**The mobile device should support GPRS, EDGE or 3G technology. Also the operator of your mobile network should provide you with one of these services. Make sure that your mobile phone has correctly settings for the Internet access point (APN) for applications. **Internet APN** settings (which usually differ from WAP APN) you can get to know from your mobile network operator.

2. Download and Install Gooer Host software

1. Please visit <http://www.gooer.com/download.jsp> using web browser, download Gooer_RDP.exe, it is Gooer Host software.
2. Install Gooer_RDP.exe on the computers that you want to remote access.
Gooer Service is used to access your remote PC, such as access you office PC from home or access your home PC from Starbucks. You should install this host software on all computers that you want to remote control.
 - 1) Double click on the Gooer_RDP.exe and select 'Yes' button, you will get follow screen:



Click 'Browse' to select the install directory, then click next. After it, click 'Finish' to finish all installation.

- 2) After installation, the following dialog will show up:



This dialog including following configuration:

'Hostname': it is the name of your current host and you will use it when you access it from another PC or mobile device. Usually, you do not need change it.

'Email': it is your Gooer account which you used to register a Gooer account. If you do not have an account, click the 'Register' button to get one first.

'Password': it is the password of you Gooer account.

After you input your Email and Password, Click 'OK' button, The Gooer Host software will automatically login to the Gooer Service. Now, this PC is ready for remote access. You can access this PC from another PC or mobile device at anywhere. What you need to do is visit <http://www.gooer.com> and login, then you can get your computer online list.

Notes: If you do not have a Gooer account, please click the 'Register' button or goto <http://www.gooer.com/register.jsp> to get a new Gooer account first.

3. Download and Install Gooer Mobile Client Software

You can download Gooer Mobile Client software via your computer or directly download using your mobile phone.

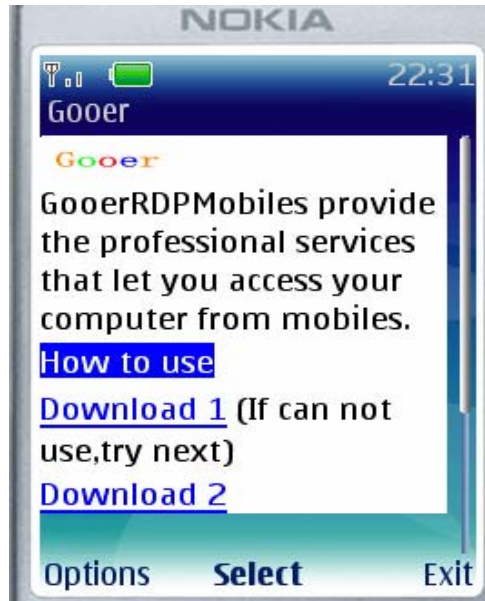
1. Download via computer

- 1) Visit <http://www.gooer.com/download.jsp> and download grdpcm.rar.
- 2) Decompress it using WinRAR, you will get file grdpcm.jar, send this file to your mobile phone via USB or Bluetooth.

2. Directly download to your mobile phone

Open the browser of your mobile phone, visit <http://wap.gooer.com>, you

can get following screen:

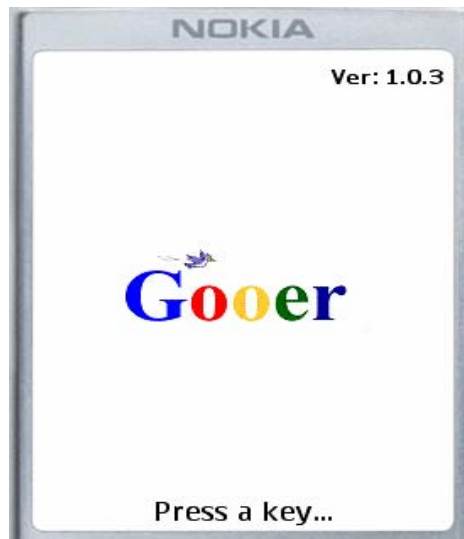


Select "Download 1", then you can download it. Installation will automatically start once download finished.

Notes: If 'Download 1' does not work, please use 'Download 2' to download it.

3.Run the Gooer Mobile Client software

1) Find the grdpcm.jar and run it. If you directly download it from wap, you can run it just after you download it. Following screen will show:



2) Please any key enter following screen:



You need input following information:

'Goer Server' and 'Goer Port': This is the default Goer Server(www.gooer.com) and port(7900), Please change the 'Goer Server' to www.gooer.com if the default value is not www.gooer.com. Please also change the port to 7900 if the default value is not 7900.

'username': It is your Goer account.

'password' : It is your Goer password.

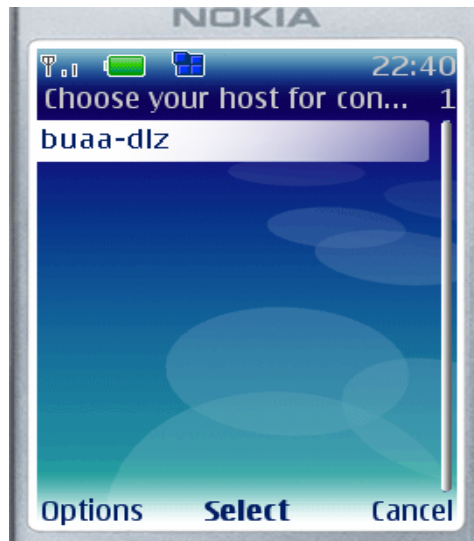
'Save Pass': Select it if you do not want to input password every times when you login.

After you set the above information, Click the 'Options' button and then click 'Save' button to save all configuration. After that, Following screen will show:



Select 'Login', if all your configuration is correct, you can get your remote

computer list as following screen:

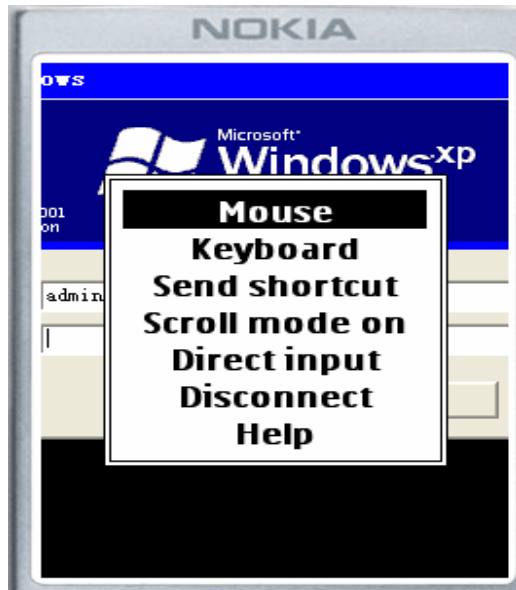


Click 'Options', and then click 'connect' to connect the computer you selected. A login screen will show after several seconds:



After a successful connection to the remote host, you will see the remote desktop on device screen. You can control the remote desktop by using both onscreen menu and desktop mode hotkeys.

Press the left button of device, main menu will show as following screen:



Main menu:

- **Mouse** : This menu item is used to perform left, right, double clicks of mouse, click and hold. You can use softkey <Select> like left click of mouse, double quick click on <Select> like double left clicks of mouse.
Note: To move mouse cursor you should use Right, Left, Up and Down navigation keys or joystick on your device.
- **Zoom in/ Zoom out** : Given menu items serve to enlarge/decrease the view of current desktop. **Zoom in** item is available if desktop size is larger than the device's screen. If the desktop resolution is equal to screen's size **Zoom in** mode won't be work.
- **Keyboard** : You can enter the text that will be transferred to remote host just like you enter it from a keyboard. Along with the plain text, you can also insert control keys and shortcuts (E.g. Alt+F4). For correct text input in your national encoding you should set the corresponding national keyboard layout. You should also switch to corresponding language on your computer just like you usually do if typing in different languages working at the local console.
Note: In order to transfer # symbol, you should enter it twice (##) as # key can be involved in other control key combinations as the first symbol (E.g. my password #Enter)
- **Send shortcut** : You can select a shortcut to send it to remote host, like entering it from keyboard.
- **Scroll** : You can scroll the desktop on your screen if desktop size larger than your screen.
- **Direct input** : If enabling this option, symbols which you enter on your device keyboard will be immediately displayed on the desktop. This

option is disabled by default; it can be used on phones with full keyboard only (E.g. Nokia 9300/9500). Anyway all phones support the direct input of numbers. This mode can also be activated from control keys menu which is called up by pressing # key. While **Direct input** mode is enabled a text cursor will be displayed on your screen instead of a mouse cursor. You can move it along your screen with navigation keys or joystick just like usual text cursor.

- **Disconnect** : You will be disconnected from the host, choosing this menu item.
- **Help** : A short description of desktop mode control keys is available under this menu option.

Appendix 1: Hotkeys Usage on Mobiles

Pressing of # key will call up the menu with control keys.

You can select the control key or a combination of control keys and send them to desktop of the computer.

Following hotkeys are available in program:

[5] - Menu Key

[1] - Left mouse click *

[2] - Left double click *

[3] - Right click*

[6] - Left click and hold *

* If not in cursor mode a key can be pressed to switch to cursor mode.

[4] - Selecting and sending keyboard shortcut from list.

[8] - Zoom In.

[9] - Zoom Out.

[*] - Turning on scroll mode.

[0] - Selecting and sending keys sequence (entering text string).

[#] - Opening/Closing Control keys menu

[SelectKey] * - [Enter]

* **SelectKey** is usually the central navigation key of Joystick on your device. The work of this key may differ depending on control mode which is currently in use.

That is in **Direct input mode**

this key performs Enter command while in mouse cursor mode pressing of this key means a mouse click.

Appendix 2: Touchscreen support.

Use stylus touch on the screen and you can see the navigation icon.



Holding the stylus down on the central icon and the menu with keys for control the desktop will appear on your mobile screen. You can choose all above functions.

Also you are able to move through the desktop via navigation points left, right, up and down. You can move the navigation icon wherever is it more suitable for you. The stylus for the phone is as useful as the mouse for the computer. One stylus touch works like mouse click, double stylus touch works like double mouse click.